

2022
Sausalito
Shores
Annual
Meeting

January 23, 2022

Welcome!



Call To Order & Board Member Introductions

[?] Emily Fitzgerald- Interim President

[?] James Pooler- Vice President

[?] Debbie Gillard- Director

[?] Sean Michaux- Director

[?] Ricky Dorman- Director

[?] Carl Krauss- Director

[?] Sue White- Director

[?] Barry Bobes- Director

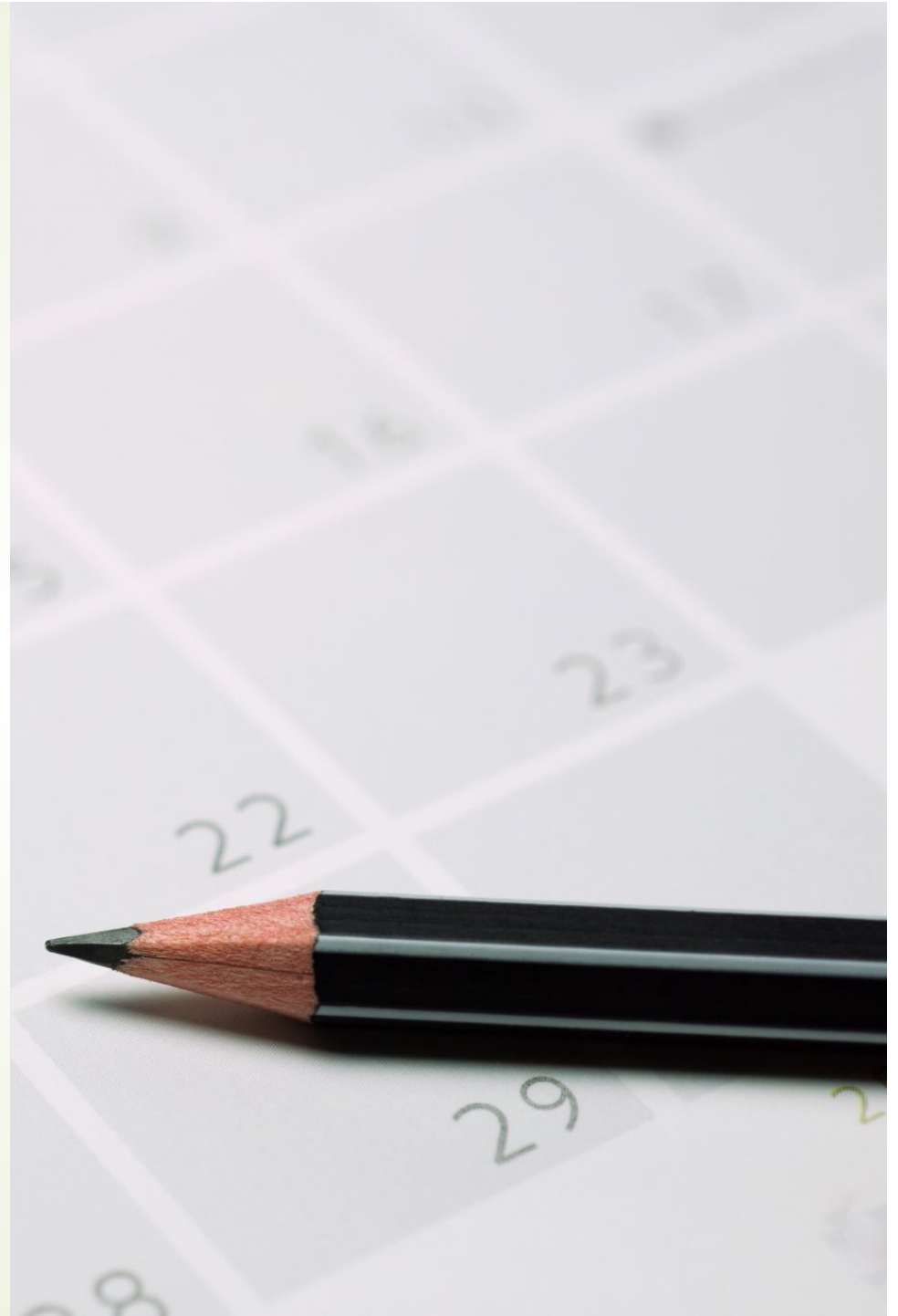
[?] Laurie Lawrence- Director

**Dave Manor-
Treasurer**

**Ron Shady-
Boat & RV**



Approval of December Meeting Minutes





Treasurer's Report

Dave Manor

125,058
125,487
124,000
105,450
86,502

154,568
56,845
110,000
150,000
35,000
83,000
45,000

95,054
97,511
99,011
99,216
101,090
101,684
101,962
102,747

121,500
125,000
154,000
95,000
154,200
110,000
89,000
50,000
68,700
123,000

Old Business: Review of 2021 SSHA Projects and Initiatives

- Easter Scavenger Hunt
- RV/Storage Lot Cleanup Day
- Clubhouse Appliances
- Good Neighbor Outreach
- Halloween Parade
- Holiday Decoration Contest
- Playground Mulch





Old Business: **2022 Improvements and Goals**

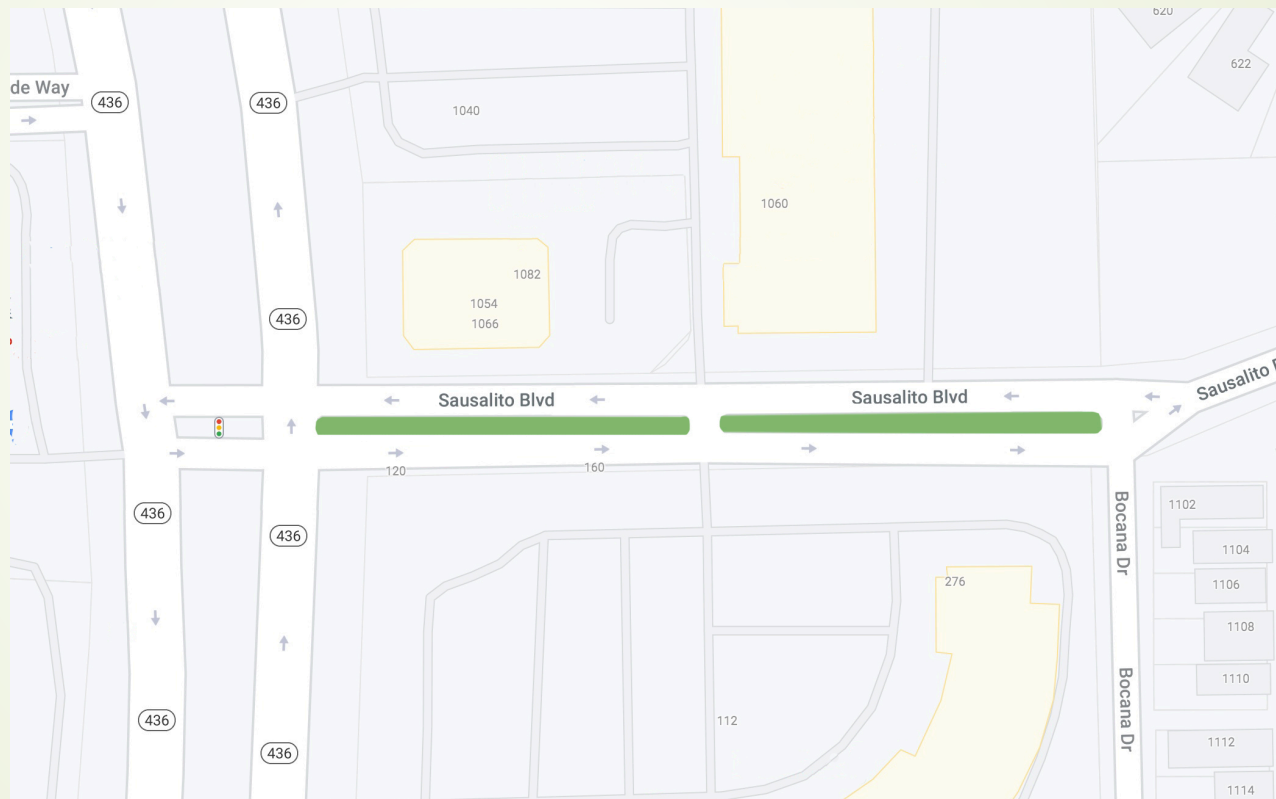
- Clubhouse Interior Improvements
- Dock Rebuild
- Rock for RV/Storage Lot
- Entrance Landscaping
- Playground and Dog Park Improvements

Proposed 436 Entrance Beautification Plan



Laurie Lawrence

436 Entrance – 2 medians



436 Entrance - 2019



436 Entrance
(after palms cut down)



436 & Sausalito Blvd. Entrance with proposed landscaping





PLANT KEY

-  **COONTIE** --28 @ \$15.00* = \$420
(cold hardy; drought tolerant; height: 3')
-  **PINK/RED SISTER**-- 50 @ \$10.00* = \$500
(Cordyline; height: 3-5')
-  **GOLD MOUND**-- 20 @ \$20.00* = \$400
(drought tolerant; height 1-3')
-  **DWARF OYSTER PLANTS**--24 @ \$10.00* = \$240
(drought & heat tolerant; height: 1'-2')
-  **NEEDLE PALM** -- 2 @ \$90.00* = \$180
(cold hardy; drought tolerant; height: 4'-8')

Estimated Cost of PLANTS: \$1620

**Estimated pricing. Plant choices subject to availability.*

Materials:

- 40 BAGS OF MANURE/FERTILIZER--40 @ 3.00 = \$240
to amend soil for each plant hole
- 100 BAGS OF BLACK MULCH--100 @ \$3.30 = \$330
Total Area: 767 s.f. Each bag covers 8 s.f. x 3-4 inches deep
- 36 LANDSCAPE BLOCKS--36 @ \$2.00 = \$75
to keep mulch in place along existing turf

Estimated Cost of MATERIALS: \$645

Phase 1 - Plants & Materials Cost Estimate: \$2200 - \$2300

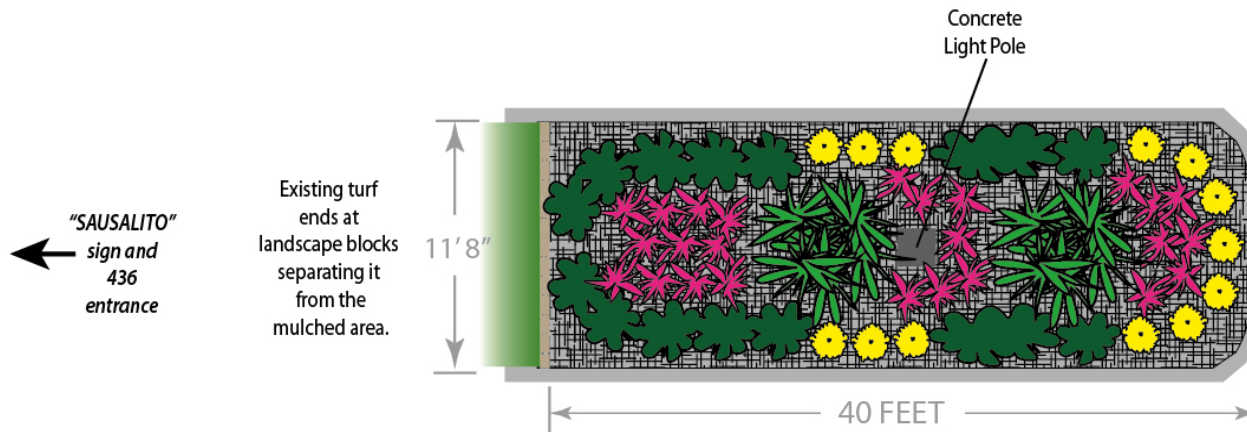
Phase 1 - Landscape Labor Cost: TBD

Taxes, delivery fees, landscape crew labor to remove & haul away old plants, amend soil, plant all plants and apply mulch -- and any watering costs -- not included. All prices subject to change.

SAUSALITO ENTRANCE LANDSCAPE PROPOSAL - PHASE 1

S.R. 436 & Sausalito Blvd. (West end of first median)

Scale is approximate



PLANT KEY



COONTIE--28 @ \$15.00* = \$420
(cold hardy; drought tolerant; height: 3')



PINK/RED SISTER-- 30 @ \$15.00* = \$450
(Cordyline; height: 3-5')



GOLD MOUND-- 13 @ \$15.00* = \$195
(drought tolerant; height 1-3')



NEEDLE PALM --2 @ \$90.00* = \$180
(cold hardy; drought tolerant; height: 4'-8')

Estimated Cost of PLANTS: \$1245

**Estimated pricing. Plant choices subject to availability.*

Materials:

- 10 BAGS OF MANURE/FERTILIZER--10 @ 3.00 = \$30 to amend soil for each plant hole
- 60 BAGS OF BLACK MULCH--60 @ \$3.30 = \$200
Total Area: 480 s.f. Each bag covers 8 s.f. x 3-4 inches deep
- 36 LANDSCAPE BLOCKS--36 @ \$2.00 = \$75 to keep mulch in place along existing turf

Estimated Cost of MATERIALS: \$305

Phase 2 - Plants & Materials Cost Estimate: \$1550 - \$1650

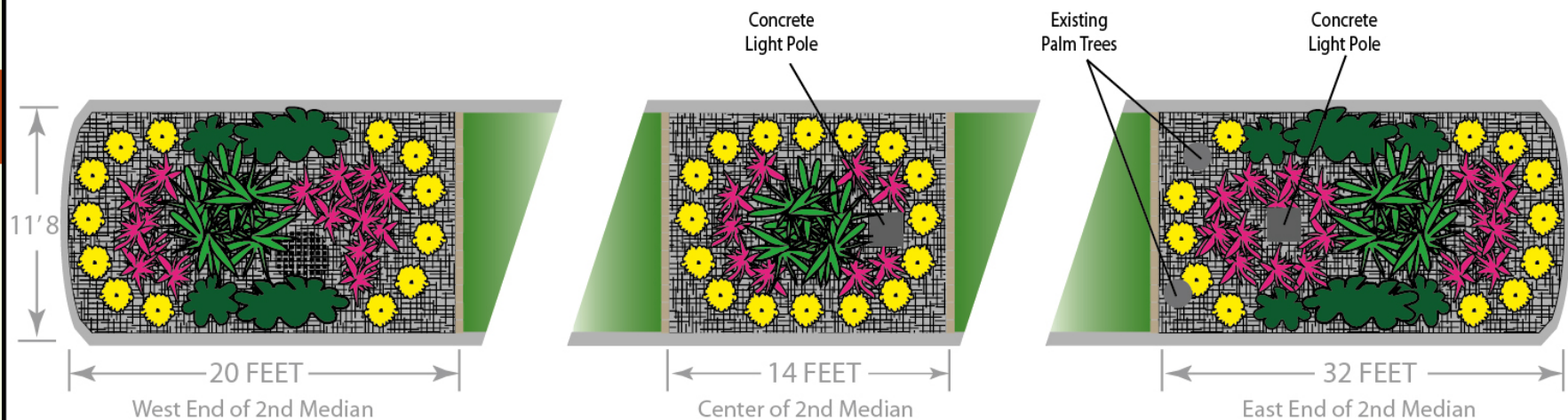
Phase 2 - Landscape Labor & Other Costs: TBD

Taxes, delivery fees, landscape crew labor to remove & haul away old plants, amend soil, plant all plants and apply mulch -- and any watering costs -- not included. All prices subject to change.

SAUSALITO ENTRANCE LANDSCAPE PROPOSAL- PHASE 2

S.R. 436 & Sausalito Blvd. (East End of First Median)

Scale is approximate



PLANT KEY



COONTIE -- 18 @ \$15.00* = \$270
(cold hardy; drought tolerant; height: 3')



PINK/RED SISTER -- 50 @ \$15.00* = \$750
(Cordyline; height: 3-5')



GOLD MOUND -- 42 @ \$15.00* = \$630
(drought tolerant; height 1-3')



NEEDLE PALM -- 3 @ \$90.00* = \$270
(cold hardy; drought tolerant; height: 4'-8')

Estimated Cost of PLANTS: \$1920

**Estimated pricing. Plant choices subject to availability.*

Materials:

- 20 BAGS OF MANURE/FERTILIZER--20 @ 3.00 = \$60
to amend soil for each plant hole
- 100 BAGS OF BLACK MULCH--100 @ \$3.30 = \$330
Total Area: 480 s.f. Each bag covers 8 s.f. x 3-4 inches deep
- 144 LANDSCAPE BLOCKS--36 @ \$2.00 = \$288
to keep mulch in place along existing turf

Estimated Cost of MATERIALS: \$678

Phase 3 - Plants & Materials Cost Estimate: \$2600 - \$2700

Phase 3 - Landscape Labor & Other Costs: TBD

Taxes, delivery fees, landscape crew labor to remove & haul away old plants, amend soil, plant all plants and apply mulch -- and any watering costs -- not included. All prices subject to change.

SAUSALITO ENTRANCE LANDSCAPE PROPOSAL - PHASE 3

S.R. 436 & Sausalito Blvd. (West End, Center, and East End - Second Median)

Scale is approximate



Needle Palm



Coontie



Cordyline (Ti)



Gold Mound



Dwarf Oyster


Key Issues

- ❓ Positive/negative image of Sausalito Shores begins at the 436 entrance
- ❓ Medians are city-owned – SSHA has taken on maintenance of medians (mowing & trimming costs)
- ❓ Irrigation system in both medians belongs to Sausalito Condos – we hope they agree to turn on irrigation.




Options

- If Condos agree to turn on the median irrigation system, Phase 1 planting could begin in spring.
- If Condos won't turn on the median irrigation system, we leave the entrance AS IS – until they are more amenable to turning on irrigation.



Casselberry Neighborhood and Homeowner Beautification Grants

-  Each year, Casselberry offers grants for up to \$2500 with a 50% match from HOA or homeowner for beautification projects
-  Grant applications available in October; deadline to apply is late January; awarded in March; install by September.
-  **Next grant cycle:** We may submit an application for RED BUG LAKE ENTRANCE Beautification and the SONORA/SAUSALITO ENTRANCE Beautification.
-  For more information, go to:
Casselberry.org/674/Neighborhood-Improvement-Grant-Program

**Neighborhood
Workday
March 26th**

Sign up on our website!





New Business: 2022 Annual Budget

Dave Manor

125,058
125,487
124,000
105,450
86,502

154,568
56,845
110,000
150,000
35,000
83,000
45,000

95,054
97,511
99,011
99,216
101,090
101,684
101,962
102,747

125,000
154,000
95,000
154,200
110,000
89,000
50,000
68,700
123,000



New Business: 2022 Board Members

Returning:

- Emily Fitzgerald
- James Pooler
- Debbie Gillard
- Sean Michaux
- Ricky Dorman
- Carl Krauss
- Barry Bobes
- Laurie Lawrence

Leaving:

Sue White

New:

Karen Yannon

Public Comment

Questions and Comments





**Verify Attendance:
February 15, 2022**



Adjournment

Thank you for attending!!!

Keep up to date on Neighborhood News on
our website: www.Sausalitoshores.com